

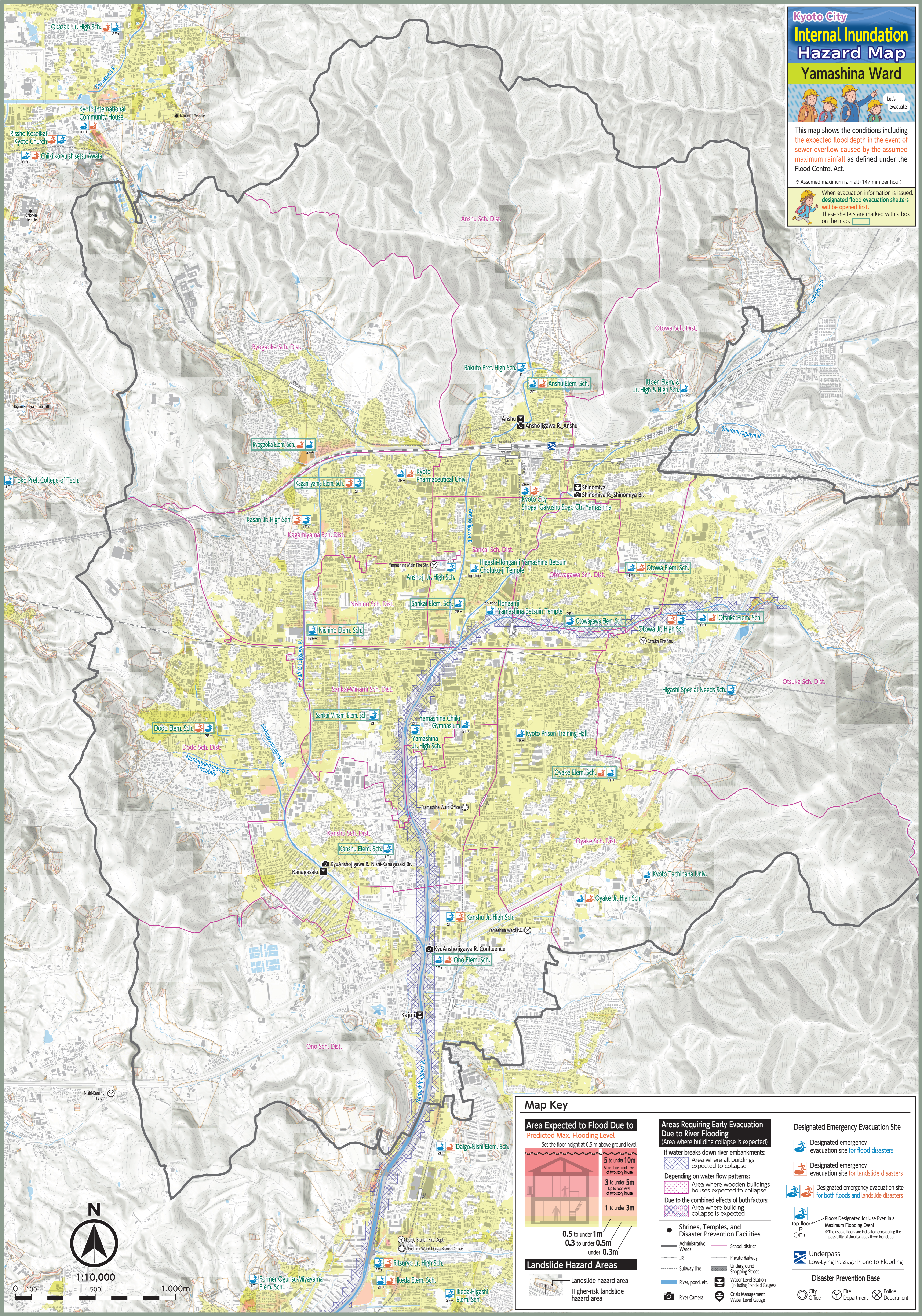
Kyoto City Internal Inundation Hazard Map Yamashina Ward



This map shows the conditions including the expected flood depth in the event of sewer overflow caused by the assumed maximum rainfall as defined under the Flood Control Act.

※ Assumed maximum rainfall (147 mm per hour)

When evacuation information is issued, designated flood evacuation shelters will be opened first. These shelters are marked with a box on the map.

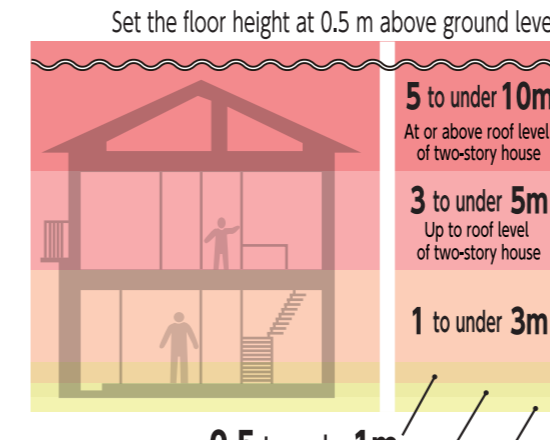


1:10,000



Map Key

Area Expected to Flood Due to Predicted Max. Flooding Level
Set the floor height at 0.5 m above ground level



0.5 to under 1m
0.3 to under 0.5m
under 0.3m

Landslide Hazard Areas

Landslide hazard area
Higher-risk landslide hazard area

Areas Requiring Early Evacuation Due to River Flooding
(Area where building collapse is expected)

If water breaks down river embankments:
Area where all buildings expected to collapse

Depending on water flow patterns:
Area where wooden buildings houses expected to collapse

Due to the combined effects of both factors:
Area where building collapse is expected

Shrines, Temples, and Disaster Prevention Facilities

- Administrative Wards
- JR
- Subway line
- River, pond, etc.
- River Camera
- School district
- Private Railway
- Underground Shopping Street
- Water Level Station (Including Standard Gauges)
- Crisis Management Water Level Gauge

Designated Emergency Evacuation Site

- Designated emergency evacuation site for flood disasters
- Designated emergency evacuation site for landslide disasters
- Designated emergency evacuation site for both floods and landslide disasters
- top floor R
F+

Floors Designated for Use Even in a Maximum Flooding Event
※ The usable floors are indicated considering the possibility of simultaneous flood inundation.

Underpass
Low-Lying Passage Prone to Flooding

Disaster Prevention Base

- City Office
- Fire Department
- Police Department